

Governance

Alliances reflect the regions from which they arise, they have different memberships, structures and operations. There is a range of governance structures also.

NAGA governance structure:

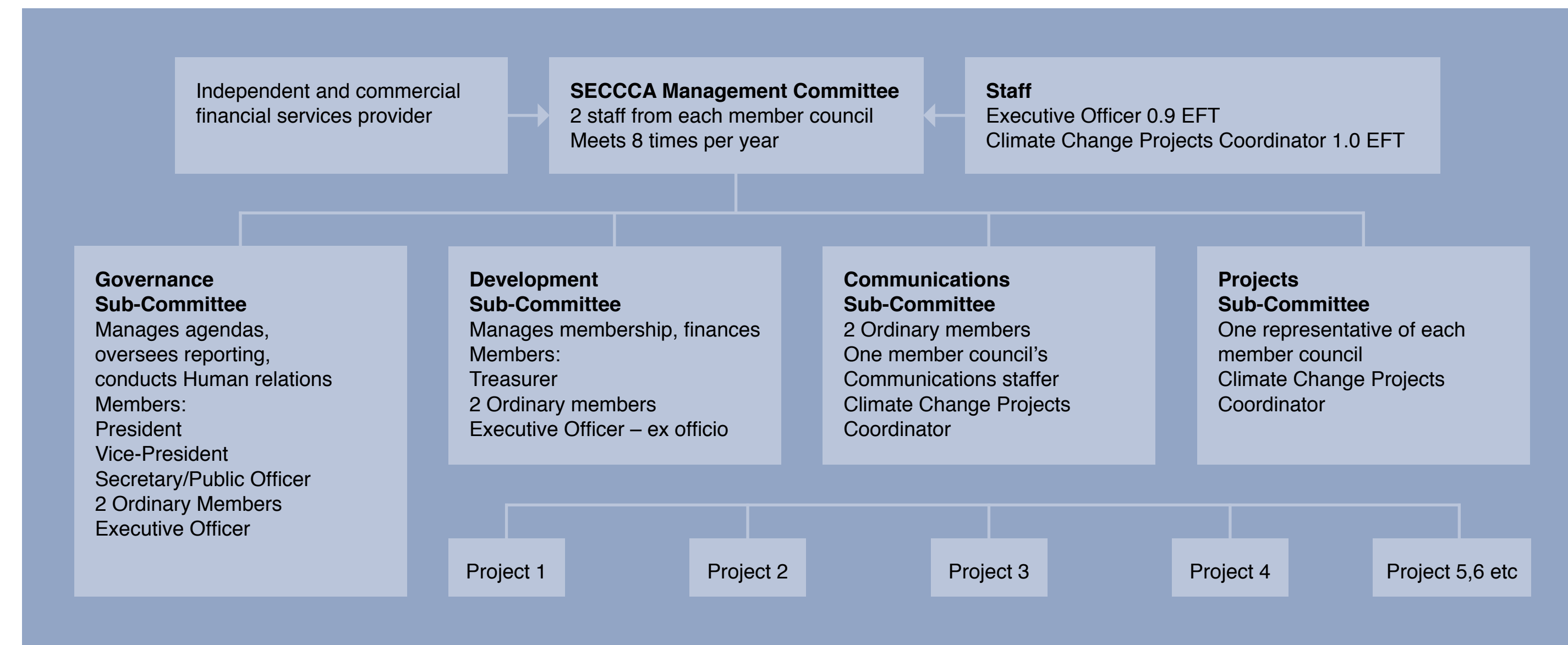
NAGA has implemented a formal governance structure to ensure accountability, and maintain mechanisms for involvement. NAGA's governance structures ensure sound and effective decision-making; incorporate processes for accountability to the alliance and to individual alliance members; and maintain effective communication and information exchange within NAGA's network.

	Representation	Meeting frequency	Focus/role
Formal structures			
NAGA Executive	Councillor or senior staff, MEFL CEO	quarterly	<ul style="list-style-type: none"> strategic directions high level members' engagement finance strategy advocacy
NAGA Steering Committee	Sustainability and climate change officers, sustainability and environment coordinators	bimonthly	<ul style="list-style-type: none"> financial management project establishment and management working groups reporting advocacy
Informal groups			
NAGA Working Groups: <ul style="list-style-type: none"> Adaptation Cogeneration project-based 	officers, coordinators, other council staff, project partners	as needed	<ul style="list-style-type: none"> ongoing project management; recommendations to Steering Committee technical discussion detailed project development
Information dissemination, partnerships			
NAGA network	officers, coordinators, external partners and stakeholders	bimonthly	<ul style="list-style-type: none"> Forums based on presentations and questions members' presentations topical presentations from partners, others, project presentations

South East Councils Climate Change Alliance Inc

8 councils, 860,000 residents, 15 million tonnes GhG

SECCCA also has a formal governance structure as shown in the diagram below. Members of the Management Committee are formal nominees of their councils, Senior members and elected officials receive annual briefings on SECCCA's work.



Delivery Capacity

Alliances:

- Develop projects for greenhouse abatement measures for member councils and their communities
- Develop and deliver adaptation programs
- Partner with government in the delivery of integrated and targeted State and Commonwealth programs
- Build the capacity of local government, community and the private sector to engage in climate change response

Alliances bring in outside funds and expertise for a local government to deliver above and beyond what would otherwise be possible.

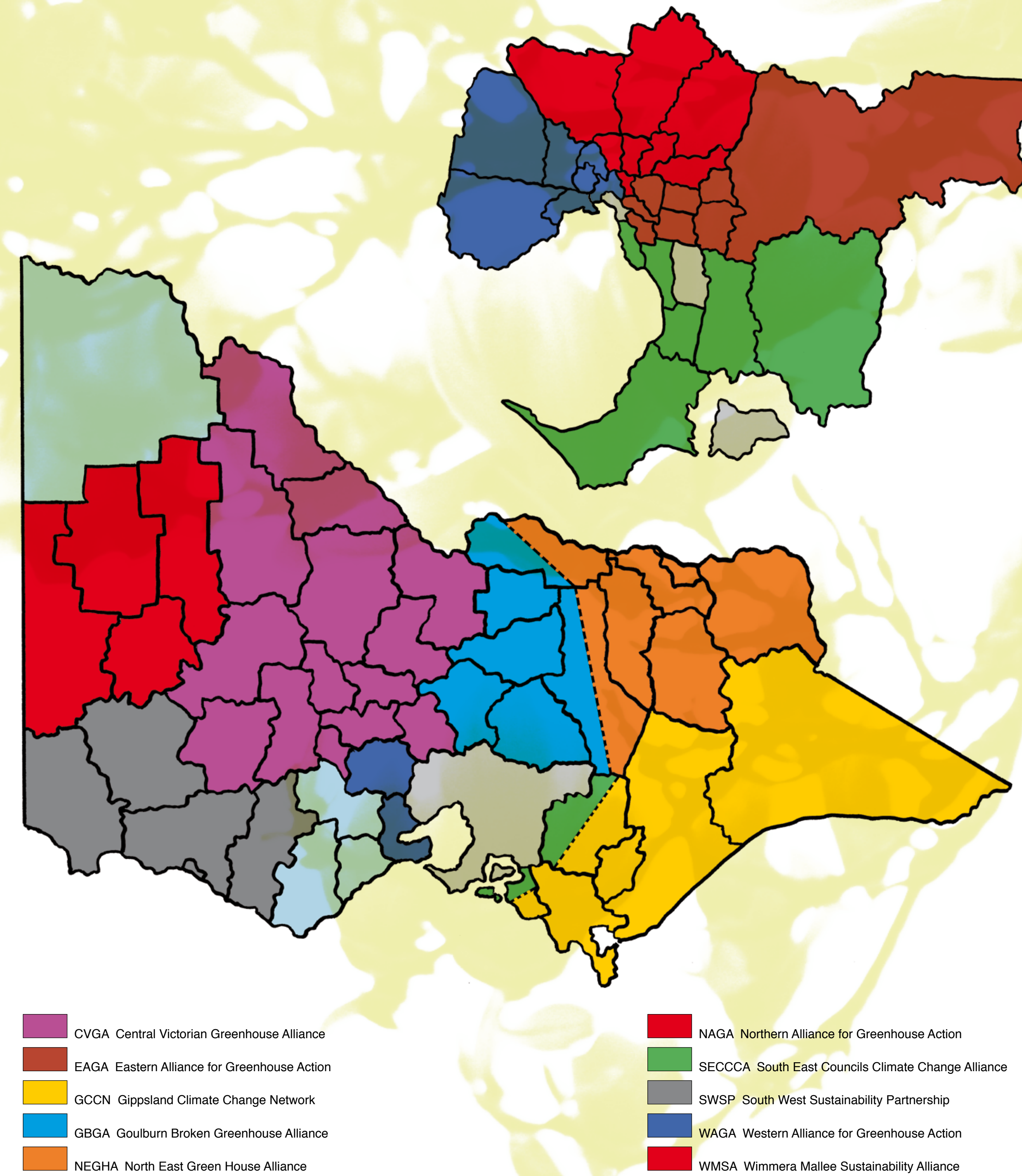
Alliance projects are the full work-load of alliance staff so there can be confidence in the timely and efficient delivery of regional projects.

Alliances offer a two-way benefit for both local and state government. State government informs local government of emerging issues and approaches such that local government could work within a context of better and current information. Conversely state government is informed of issues and approaches being taken in local government such that policy development and implementation is relevant to regional realities.



THINKING GLOBALLY, ACTING REGIONALLY

Victoria's Greenhouse Alliances



Benefits of Collaboration

Coordination and collaboration among local governments addresses capacity constraints. Regional alliances and groupings of councils are effective and efficient vehicles for implementation. Regional groupings can deliver nationally significant priorities whilst addressing local issues in a cost effective manner.

Benefit	Detail
Leverage funding	Alliances submit applications on behalf of councils to bring in extra funding
Aggregation	Small contributions from individual councils aggregate to the amount required for project implementation.
Project delivery	Alliances create partnerships, share expertise and source technical knowledge for project creation and delivery project implementation
Efficiency	In-house project delivery rather than through external consultancies builds internal capacity and expertise
Synergies	Partnerships and resources applied to one project informs and supports delivery in a range related projects
Risk management	Risks of project non-implementation are minimised through on-going monitoring and support of alliance staff
Flexibility	Alliances have flexibility to imagine projects, create partnerships and develop and deliver innovative projects

Project Snapshots

Sustainable Homes: SECCCA

There is no point designing or buying a 5 star home if you only lead a 2 star lifestyle! Learn how to operate your sustainable home so that you can realise the sustainable benefits. The Sustainable Homes Program, set in a local neighbourhood house or community centre, leads residents through sound and environmentally-sustainable decisions for home and family. Trained facilitators guide participants through the facts, activities and challenges to build and/or live in a sustainable home and, on the way, generate savings in energy and water bills. Participants learn from demonstrations, workshops and group discussions in a relaxed and social atmosphere. The Sustainable Homes program is also featured in a new zero emissions house, Selandra Community Place, in the greenfields Selandra Rise estate.

Deciding for the coast: implementing effective adaptation actions: SECCCA

Deciding for the coast is developing decision support tools and pathways for decision makers in coastal adaptation planning around Western Port. With the tools developed through the project, a coastal planner can decide between alternative options and ensure that necessary decision-making steps for coastal adaptation are soundly based and can be practically implemented. Sea changers and long term residents alike look to their council for prudent planning decisions in this next phase for responding to climate change impacts.

Council Connections workshop series: WAGA, SECCCA, NAGA

The Council Connections workshop series contributes to the development of council adaptation skills by providing a forum where practitioners discuss and learn from their peers as well as specialists. Workshops held to date have explored Adaptation and Legal Risk; Adaptation and Land Use Planning and the Health and Social Dimensions of Climate Change Adaptation. The facilitated Council Connections workshops, organised by the metropolitan Greenhouse Alliances in association with the Municipal Association of Victoria and VCCCAR, are also addressed by leading thinkers in their fields. A Plenary workshop, to draw together all participants and to consider the overarching themes of leadership, communication, and roles and responsibilities, will be held in August 2012.

Towards Zero Net Emissions in the NAGA Region

The Northern Alliance for Greenhouse Action's strategic blueprint – the first of its kind in Australia – for cutting greenhouse gas emissions by 25 per cent by 2020 is detailed in its regional plan Towards Zero Net Emissions. Towards Zero Net Emissions for the NAGA Region (TZNE) represents a major collaboration between the NAGA members. It aims to achieve significant reductions in carbon emissions in the fast-growing region of northern metropolitan Melbourne, in which 25% of the city's population live. Actions span the industrial, commercial, residential and transport sectors, and focus on energy efficiency and renewable or low emissions energy generation.



NORTHERN ALLIANCE FOR GREENHOUSE ACTION
Judy Bush • Executive Officer • judy@mefl.com.au • 03 9385 8504
www.naga.org.au



SOUTH EAST COUNCILS CLIMATE CHANGE ALLIANCE
Greg Hunt • Executive Officer • ghunt@casey.vic.gov.au • 0400 948 546
www.seccca.org.au

